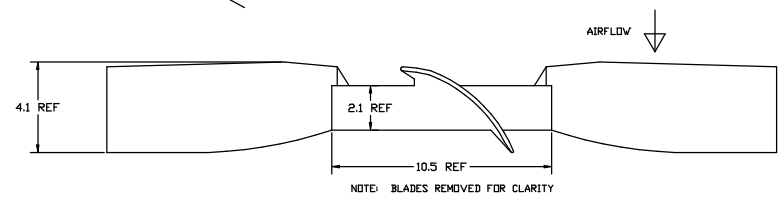
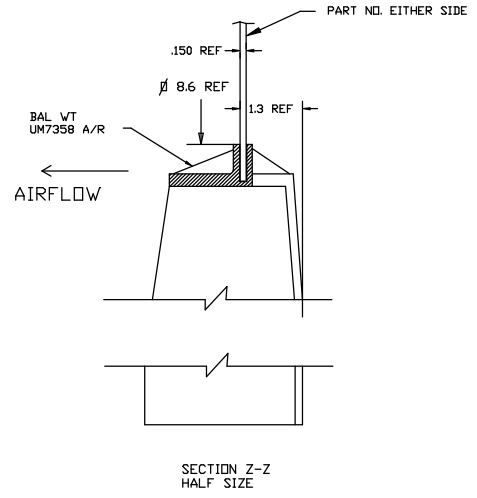
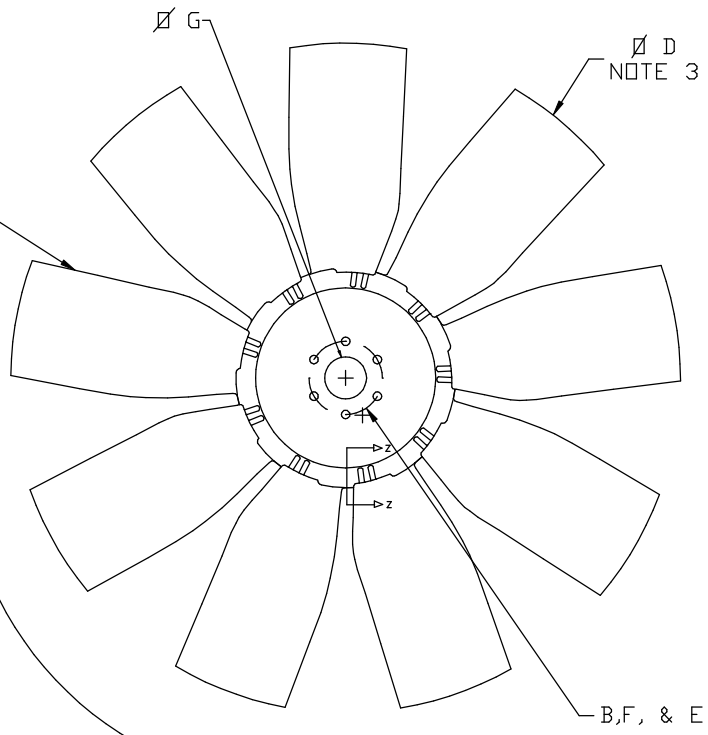


ACS PART NUMBER	G PILOT # REF	B REF HOLE # REF	F REF HOLE # REF	E HOLE # REF	NOTES	H DISK
782200	2.000/2.003	3.500	.406	6		10150002004635
78210X	1.002/1.004	—	—	—		10150001000000
782369	3.687/3.690	4.630	.406	6		10150003694646
78225A	2.562/2.565	3.500	.406	6		101500025A4635

SEE PILOT LISTING P/N 999999 FOR ADDITIONAL PILOTS

NOTES:
 1. MATERIAL: B3WG6 DR PA6GF30 NYLON 6 GLASS FILLED 30%
 2. BALANCE TO .4 OZ/IN. BALANCE TO BE ACHIEVED BY MATERIAL REMOVAL AT BLADE TIP UP TO .3 INCHES ON 4 BLADES OR BY ADDITION OF BALANCE WEIGHTS ON HUB RIBS.
 3. A DASH NUMBER WILL BE INCLUDED DESIGNATING FAN DIAMETER (ØD).
 EX: 782500-32 (INCHES)
 OR 782500-Ø13 (MM).
 THE MAX REFERENCE FAN DIA IS 32 INCHES.
 THE DIA TOLERANCE ON MOLDED FAN DIAMETERS IS +.150/- .236.
 THE DIA TOLERANCE ON CUT DIAMETERS IS +0/- .236.
 4. PROJECTED WIDTH IS DEFINED AS THE MAXIMUM MEASUREMENT FRONT TO BACK.

9 BLADES
EQ SP



A 0045 RELEASED GFS 2406105
 SYM EGN REVISION DATE



PART NAME
FAN ASSEMBLY - 782

DRAWN GFS	APPROVED
DATE 9SEPT05	SCALE 1/4
MATERIAL NOTED	ENGRG J. JAHNS
SHRINK .05 IN/IN	QC
FINISH NOTED	WFO

CUSTOMER

CUSTOMER PART NO.

TOL. UNLESS SPECIFIED
 .00X +/- .005
 .01X +/- .005
 .02X +/- .007
 .05X +/- .01

ACS PART NO. **782XXX**