

ACS PART NUMBER	G PILOT # REF	B REF DIAMETER # REF	F REF HOLE # REF	E # HOLES REF	NOTES	H DISK
781200	2.000/2.003	3.500	.406	6		10150002004635
78110X	1.002/1.004	—	—	—		10150001000000
781369	3.687/3.690	4.630	.406	6		10150003694646
78125A	2.562/2.565	3.500	.406	6		101500025A4635

SEE PILOT LISTING P/N 999999 FOR ADDITIONAL PILOTS

NOTES:

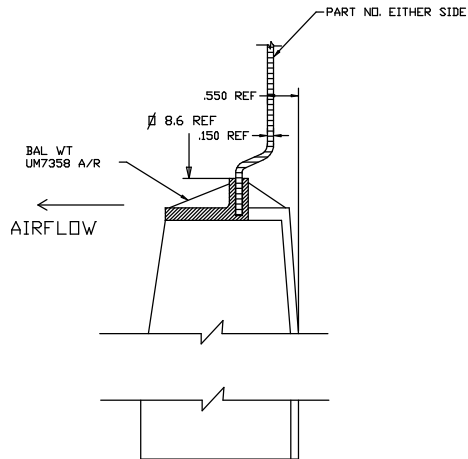
- MATERIAL: B3WG6 DR PA6GF30 NYLON 6 GLASS FILLED 30%
- BALANCE TO 4 OZ/IN. BALANCE TO BE ACHIEVED BY MATERIAL REMOVAL AT BLADE TIP UP TO .3 INCHES ON 4 BLADES OR BY ADDITION OF BALANCE WEIGHTS ON HUB RIBS.
- A DASH NUMBER WILL BE INCLUDED DESIGNATING FAN DIAMETER (ØD). EX: 781500-32 (INCHES) OR 781500-919 (MM). THE MAX REFERENCE FAN DIA IS 32 INCHES. THE DIA TOLERANCE ON MOLDED FAN DIAMETERS IS +.150/- .236. THE DIA TOLERANCE ON CUT DIAMETERS IS +0/- .236.
- PIV AT THE TIP OF THE BLADE, DEFINED AS THE MAXIMUM MEASUREMENT FRONT TO BACK.

9 BLADES EQ SP

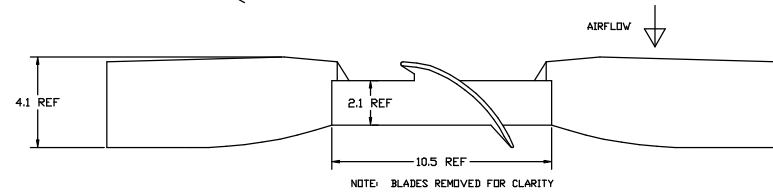
ROTATION

Ø D NOTE 3

B,F, & E



SECTION Z-Z
HALF SIZE



NOTE: BLADES REMOVED FOR CLARITY

A 0045	RELEASED	GFS 2406105
SYM EGN	REVISION	DK'D DATE



PART NAME
FAN ASSEMBLY - 781

DRAWN	GFS	APPROVED	
DATE	9SEPT05	SCALE	1/4
MATERIAL	NOTED	ENGRG	J. JAHNS
SHRINK	.05 IN/IN	QC	
FINISH	NOTED	WFO	

TOL. UNLESS SPECIFIED DIM +/- .005 HOLE +/- .005 ANGLE +/- .1°	CUSTOMER
	CUSTOMER PART NO.
ACS PART NO.	781XXX