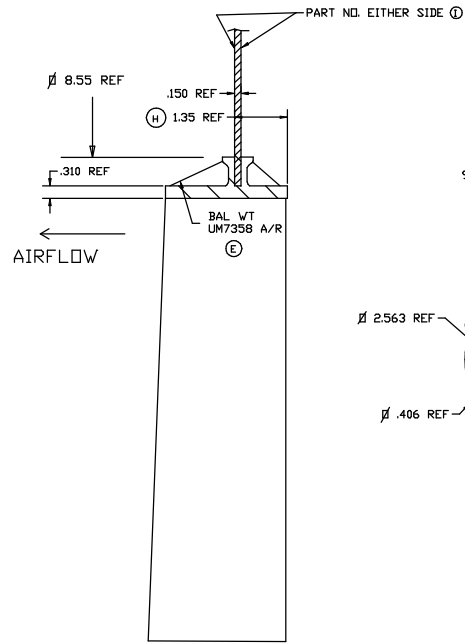


ACS PART NUMBER	G PILOT #	B REF. CIRCLE #	F REF. HOLE #	E # HOLES	NOTES	H DIMS	PW
444200	2.000/2.003	3.500	.406	6		10150002004635	3.788 MAX
44410X	1.002/1.004	—	—	—		10150001000000	3.788 MAX
444256	2.562/2.565	3.500	.406	6	PILOT PER VIEW A	10150002564635	3.788 MAX
444500	5.001/5.004	6.000	.406	6		10150005004660	3.788 MAX
444369	3.687/3.690	4.630	.406	6		10150003694646	3.788 MAX
444300	3.002/3.005	5.250	.433	6		10150003004652	3.788 MAX
444325	3.250/3.253	3.810	.406	4		10150003254438	3.788 MAX
444161	1.614/1.617	2.500	.343	4		10150001613425	3.788 MAX
444100	1.002/1.004	2.360	.406	4		101500010034194424	3.788 MAX
444400	4.000/4.003	4.478	.228	8		10150004002845	3.788 MAX

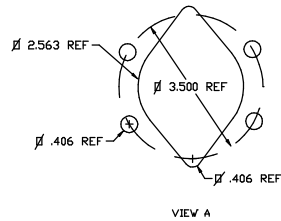
- (G)
- (C)
- (G)
- (D)
- (E)
- (B)
- (G)
- (D)
- (C)
- (G)
- (D)
- (G)
- (D)
- (G)

SEE PILOT LISTING P/N 999999 FOR ADDITIONAL PILOTS (F)

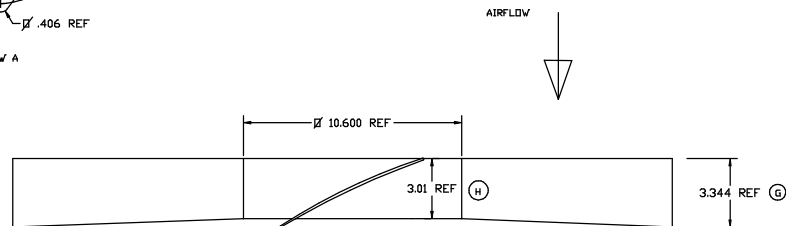
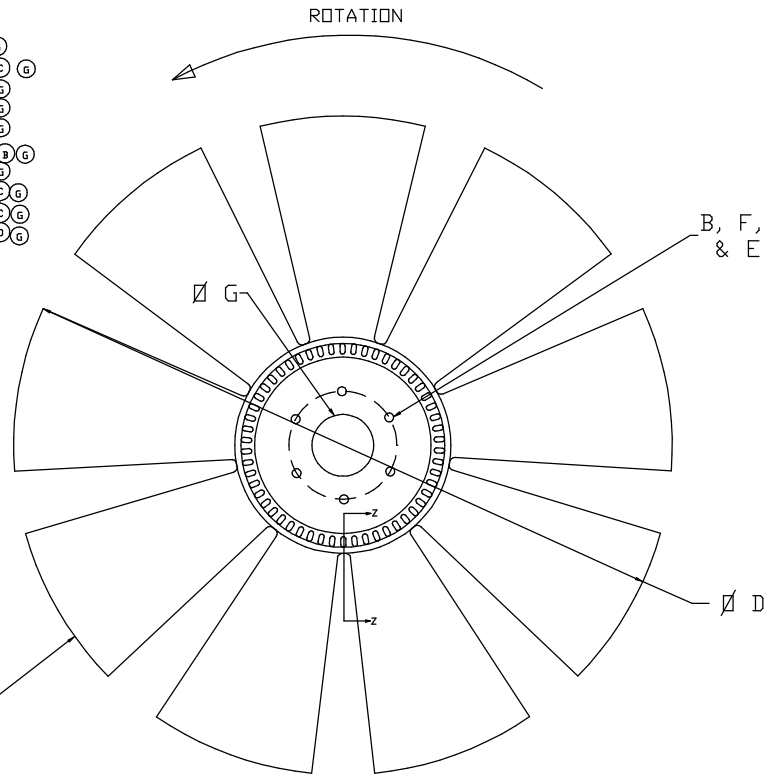
- NOTES:
- MATERIAL: B3WG6 OR PA6GF30 NYLON 6 (GLASS FILLED 30%)
 - BALANCE TO 4 OZ/IN. BALANCE TO BE ACHIEVED BY MATERIAL REMOVAL AT BLADE TIP UP TO .3 INCHES ON 4 BLADES OR BY ADDITION OF BALANCE WEIGHTS ON HUB RIBS.
 - A DASH NUMBER WILL BE INCLUDED DESIGNATING FAN DIAMETER (ØD).
EX: 444500-32 (INCHES)
OR 444500-813 (MM).
THE MAX REFERENCE FAN DIA IS 32 INCHES.
THE DIA TOLERANCE ON MOLDED FAN DIAMETERS IS +.150/- .236.
THE DIA TOLERANCE ON CUT DIAMETERS IS +0/- .236.
 - PW IS DEFINED AS THE MAXIMUM MEASUREMENT FRONT TO BACK.



SECTION Z-Z
HALF SIZE



9 BLADES
EQUALLY
SPACED



NOTE: BLADES REMOVED FOR CLARITY

REV	DESCRIPTION	DATE	BY	CHK'D	DATE
I 0046	CORRECT DWG				
H 0045	MODIFY NOTE 3 AND ADD REF DIMS				
G 0040	CORRECT PV				
F 0019	ADD NOTE ON PILOTS				
E 0018	ADD BALANCE WEIGHT P/N TO PRINT				
D 0012	ADD 4.0 PILOT				
C 0006	CHGD AND ADDED 1.0 PILOT, COR DWG				
B 0007	CHANGED TO 3.002/3.005 PILOT				
A 0003	RELEASED				
SYM ECN	REVISION				



PART NAME
FAN ASSEMBLY - 444

DRAWN GFS	APPROVED
DATE 10MAY99	SCALE 1/4
MATERIAL NOTED	ENGRG G. SPRINGMAN
THICK .05 IN/IN	QC
FINISH NOTED	MFG

CUSTOMER

THIS DRAWING HAS BEEN REVIEWED IN ACCORDANCE WITH ASME Y14.2M-1994

CUSTOMER PART NO.

UNTIL UNLESS SPECIFIED
DIM 1/2" - .005
3/4" - .007
1" - .010
2" - .015
3" - .020
4" - .025
5" - .030
6" - .035
7" - .040
8" - .045
9" - .050
10" - .055
11" - .060
12" - .065
13" - .070
14" - .075
15" - .080
16" - .085
17" - .090
18" - .095
19" - .100
20" - .105
21" - .110
22" - .115
23" - .120
24" - .125
25" - .130
26" - .135
27" - .140
28" - .145
29" - .150
30" - .155
31" - .160
32" - .165
33" - .170
34" - .175
35" - .180
36" - .185
37" - .190
38" - .195
39" - .200
40" - .205
41" - .210
42" - .215
43" - .220
44" - .225
45" - .230
46" - .235
47" - .240
48" - .245
49" - .250
50" - .255
51" - .260
52" - .265
53" - .270
54" - .275
55" - .280
56" - .285
57" - .290
58" - .295
59" - .300
60" - .305
61" - .310
62" - .315
63" - .320
64" - .325
65" - .330
66" - .335
67" - .340
68" - .345
69" - .350
70" - .355
71" - .360
72" - .365
73" - .370
74" - .375
75" - .380
76" - .385
77" - .390
78" - .395
79" - .400
80" - .405
81" - .410
82" - .415
83" - .420
84" - .425
85" - .430
86" - .435
87" - .440
88" - .445
89" - .450
90" - .455
91" - .460
92" - .465
93" - .470
94" - .475
95" - .480
96" - .485
97" - .490
98" - .495
99" - .500
100" - .505

ACS PART NO.
444XXX