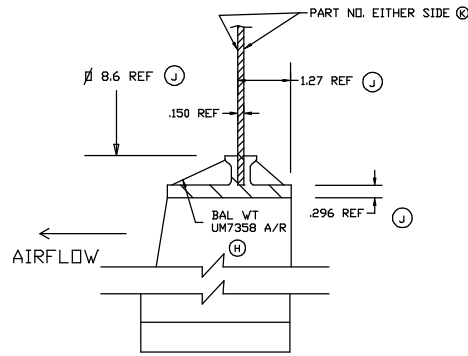
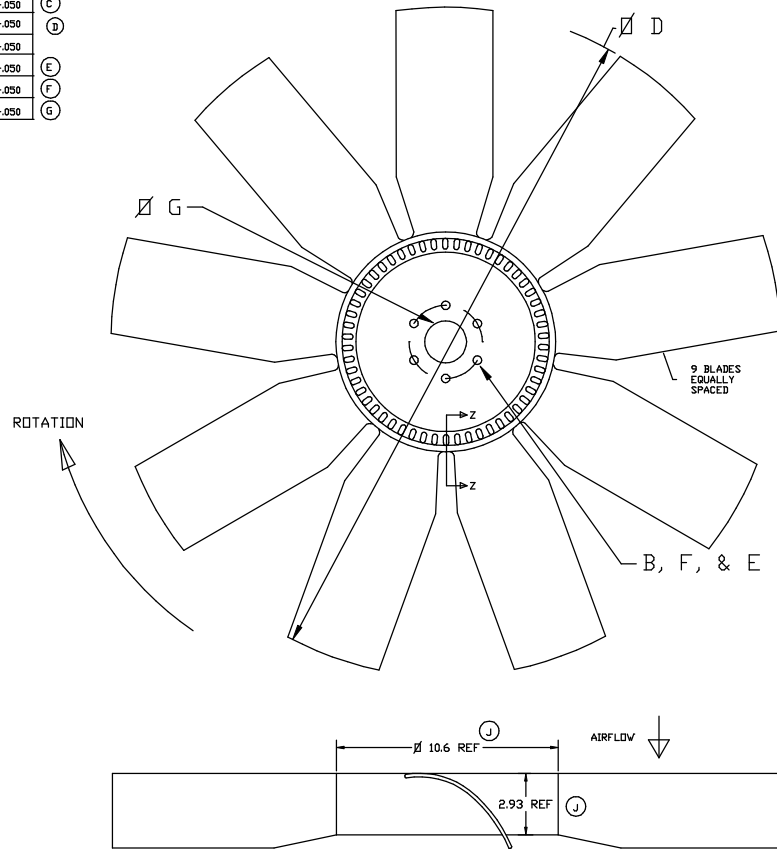


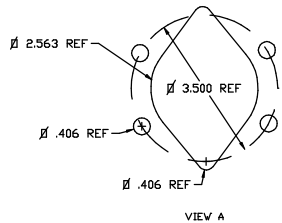
ACE PART NUMBER	G PILOT #	B REF DIA #	F REF DIA #	E # HOLES	NOTES	H DISK	PW
392200	2.000/2.003	3.500	.406	6		10150002004635	3.565+/--.050
39210X	1.002/1.004	—	—	—		10150001000000	3.565+/--.050
392256	2.562/2.565	3.500	.406	6	PILOT PER VIEW A	10150002564635	3.565+/--.050
392500	5.001/5.004	6.000	.406	6		10150005004660	3.565+/--.050
392100	1.002/1.004	1.970	.343	4		101500010034194424	3.565+/--.050
392369	3.687/3.690	4.630	.406	6		10150003694646	3.565+/--.050
392400	4.000/4.003	4.478	.288	8		10150004002845	3.565+/--.050
392325	3.250/3.253	3.810	.406	4		10150003254438	3.565+/--.050
39225A	2.562/2.565	3.500	.406	6		101500025A4635	3.565+/--.050

NOTES:
1. MATERIAL: B3WG6 OR PA6GF30 NYLON 6 GLASS FILLED 30%
2. BALANCE TO 4 OZ/M. BALANCE TO BE ACHIEVED BY MATERIAL REMOVAL AT BLADE TIP UP TO .3 INCHES ON 4 BLADES OR BY ADDITION OF BALANCE WEIGHTS ON HUB RIBS.
3. A DASH NUMBER WILL BE INCLUDED DESIGNATING FAN DIA IN (Ø). EX: 392500-32 (INCHES) OR 392500-813 (MM). THE MAX REFERENCE FAN DIA IS 32 INCHES. THE DIA TOLERANCE ON MOLDED FAN DIAMETERS IS +.150/-.236. THE DIA TOLERANCE ON CUT DIAMETERS IS +0/-.236.
4. PW IS DEFINED AS THE MAXIMUM MEASUREMENT FRONT TO BACK.

SEE PILOT LISTING P/N 999999 FOR ADDITIONAL PILOTS ①



SECTION Z-Z
HALF SIZE



REV	BY	DATE	DESCRIPTION	CHK'D

K 0046	CORRECT DWG	GFS 20DEC05
J 0045	ADD NOTE 3 AND ADD REF DIMS	GFS 24CNT05
I 0019	ADD NOTE ON PILOTS	GFS 12MARG02
H 0018	ADD BALANCE WEIGHT P/N TO PRINT	GFS 20FEB02
G 0016	ADD 2.5A PILOT	GFS 22MAR01
F 0015	ADD 3.25 PILOT	GFS 15MAR01
E 0014	ADD 4.0 PILOT	GFS 01SEP00
D 0006	CHGD AND ADDED LG PILOT, CIR DWG	GFS 29CER00
C 00001	REDRAWN IN AUTOCAD, CIR DISK P/N	GFS 04APR99
B 1474	REV NOTE 2 TO INCLUDE BAL WEIGHTS	RDB 29MAY98
A	RELEASED	TD 06FEB98
SYM EGM	REVISION	DK'D DATE



PART NAME
FAN ASSEMBLY - 392

DRAWN RDB	APPROVED
DATE 23SEP97	SCALE 1/4
MATERIAL NOTED	ENGR G. SPRINGMAN
SHRINK .05 IN/IN	GC
FINISH NOTED	HF6

<small>THIS DRAWING HAS BEEN PREPARED IN ACCORDANCE WITH ASME Y14.3M-1994</small>	CUSTOMER
	CUSTOMER PART NO.
	PART NO. 392XXX

TOL UNLESS SPECIFIED
DIM +/- .035
DIM +/- .005
D +/- .005