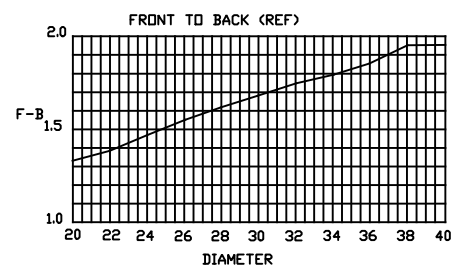
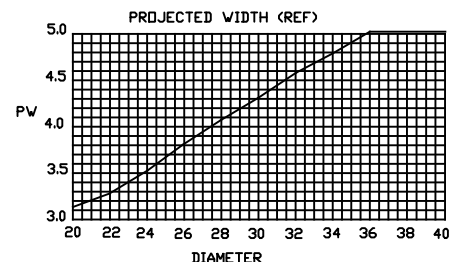
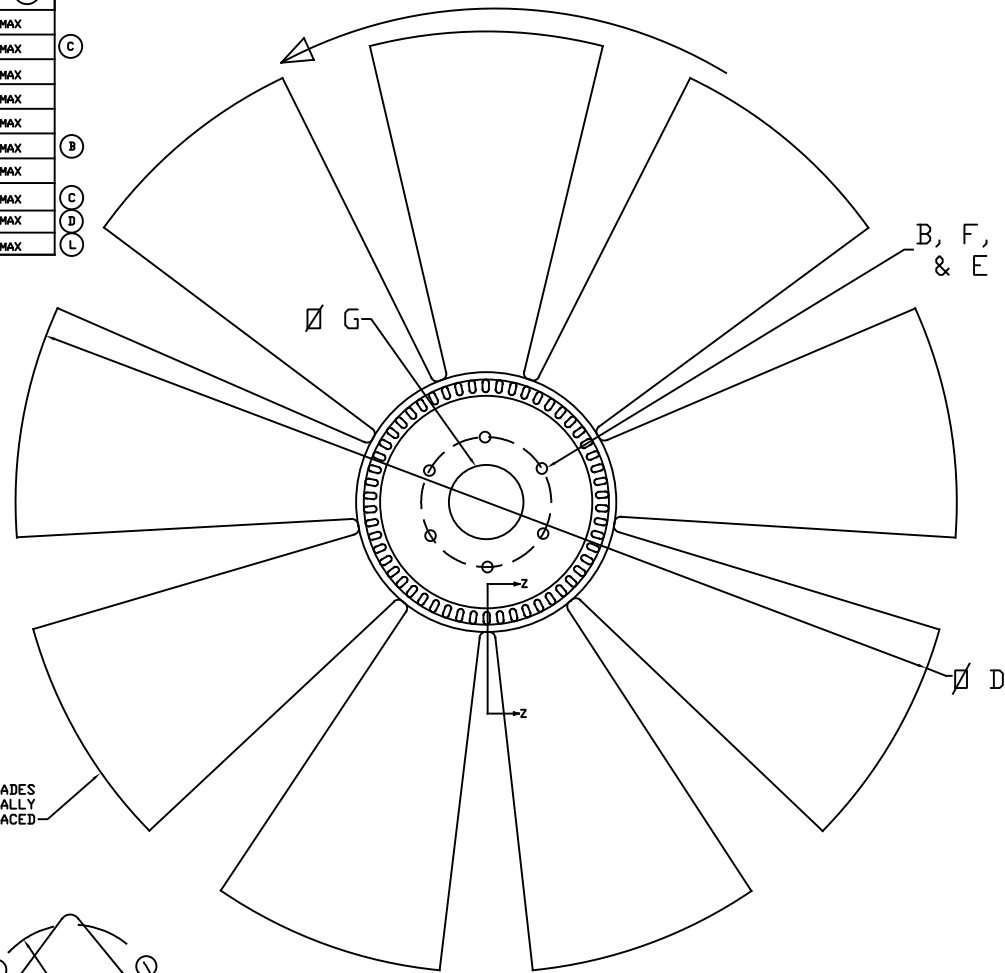


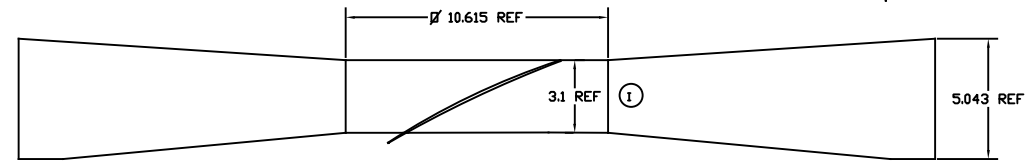
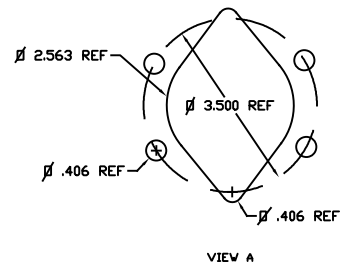
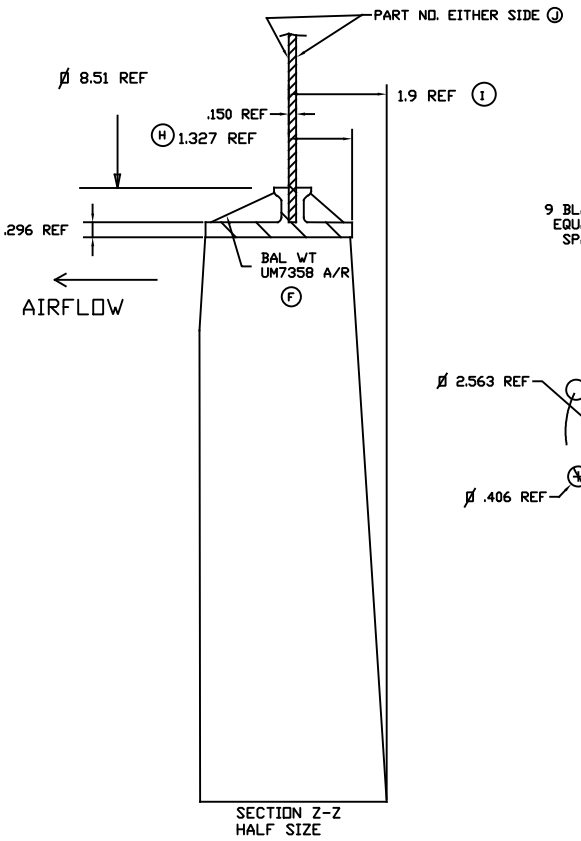
ACE PART NUMBER	G PILOT #	B REF RIB CIRCLE #	F REF RIB HOLE #	E # HOLES	NOTES	H DRNK	PW (E)
368200	2.000/2.003	3.500	.406	6		10150002004635	5.122 MAX
36810X	1.002/1.004	—	—	—		10150001000000	5.122 MAX
368256	2.562/2.565	3.500	.406	6	PILOT PER VIEW A	10150002564635	5.122 MAX
368500	5.001/5.004	6.000	.406	6		10150005004660	5.122 MAX
368369	3.687/3.690	4.630	.406	6		10150003694646	5.122 MAX
368300	3.002/3.005	5.250	.433	6		10150003004652	5.122 MAX
368325	3.250/3.253	3.810	.406	4		10150003254438	5.122 MAX
368100	1.002/1.004	1.970 2.360	.343 .406	4 4		101500010034194424	5.122 MAX
368400	4.000/4.003	4.478	.228	8		10150004002845	5.122 MAX
368196	1.967/1.970	3.937	.433	6		10150001964639	5.122 MAX

ROTATION



SEE PILOT LISTING P/N 999999 FOR ADDITIONAL PILOTS (G)

- NOTES:
- MATERIAL: B3WG6 OR PA6GF30 NYLON 6 GLASS FILLED 30%
 - BALANCE TO 4 OZ/IN. BALANCE TO BE ACHIEVED BY MATERIAL REMOVAL AT BLADE TIP UP TO .3 INCHES ON 4 BLADES OR BY ADDITION OF BALANCE WEIGHTS ON HUB RIBS.
 - A DASH NUMBER WILL BE INCLUDED DESIGNATING FAN DIAMETER (ØD). EX. 368500-40 (INCHES) OR 368500-1016 (MM). THE MAX REFERENCE FAN DIA IS 40 INCHES. THE DIA TOLERANCE ON MOLDED FAN DIAMETERS IS +.150/- .236. THE DIA TOLERANCE ON CUT DIAMETERS IS +0/- .236. THE MAXIMUM CUT DIA IS 1005 MM (39.6 IN). BEYOND 1005 THE FAN DIAMETER IS THE AS MOLDED DIAMETER OF 40 INCHES (1016 MM).
 - PW IS DEFINED AS THE MAXIMUM MEASUREMENT FRONT TO BACK.



NOTE: BLADES REMOVED FOR CLARITY

SYM	ECN	REVISION	DATE
M	0090	CHANGE MOLDED DIAMETER TO 40 INCHES	RKH 29OCT18
L	0085	ADD 1.97 PILOT	GFS 23FEB17
K	0082	CLARIFY CUT DIA CAPABILITY	GFS 20JUL16
J	0046	CORRECT DWG	GFS 20DEC05
I	0045	MODIFY NOTE 3 AND ADD REF DIMS.	GFS 24OCT05
H	0021	MODIFY NOTE 3 TO DEFINE MOLDED DIA	GFS 11APR02
		MADE HUB TO BACK DIM REF	
G	0019	ADD NOTE ON PILOTS	GFS 19MAR02
F	0018	ADD BALANCE WEIGHT P/N TO PRINT	GFS 20FEB02
E	0017	CHG PV TO MAX DIM	GFS 06DEC01
D	0012	ADD 4.0 PILOT	GFS 01SEP00
C	0006	CHGD AND ADDED 1.0 PILOT, COR DWG	GFS 29FEB0
B	0007	CHANGED TO 3.002/3.005 PILOT	GFS 29FEB00
A	0003	RELEASED	GFS 11NOV99
		REVISION	DK'D DATE



PART NAME	
FAN ASSEMBLY - 368	
DRAWN GFS	APPROVED
DATE 10MAY99	SCALE 1/4
MATERIAL NOTED	ENGR G. SPRINGMAN
DRNK .05 IN/IN	DC
FRESH NOTED	HFS
CUSTOMER	
CUSTOMER PART NO.	
ACE PART NO. 368XXX	

TOL UNLESS SPECIFIED
 .001 +/- .001
 .005 +/- .005
 .01 +/- .01
 .05 +/- .01