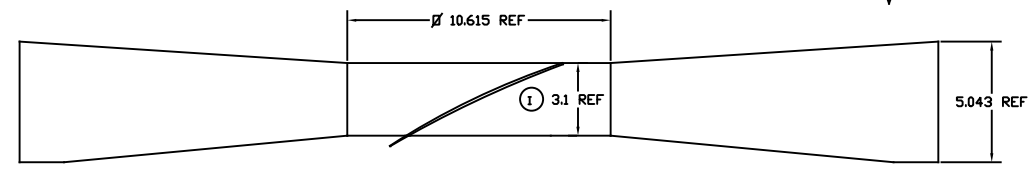
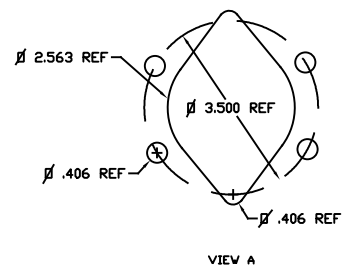
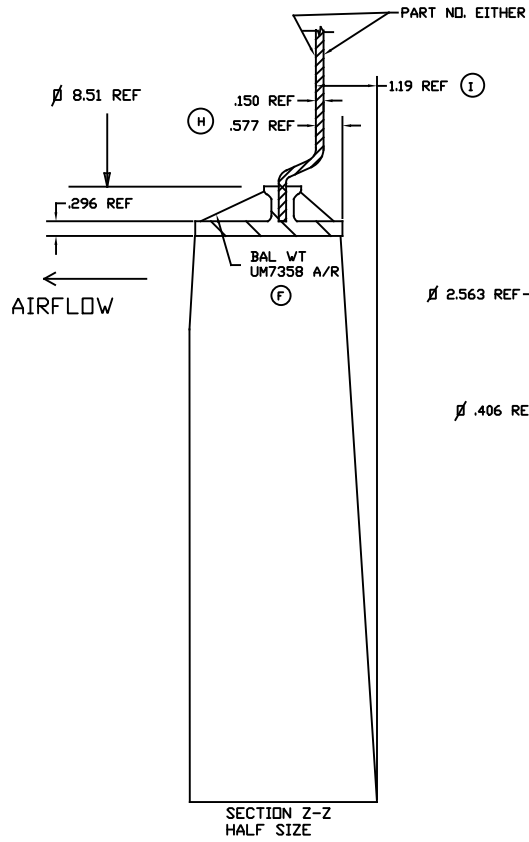
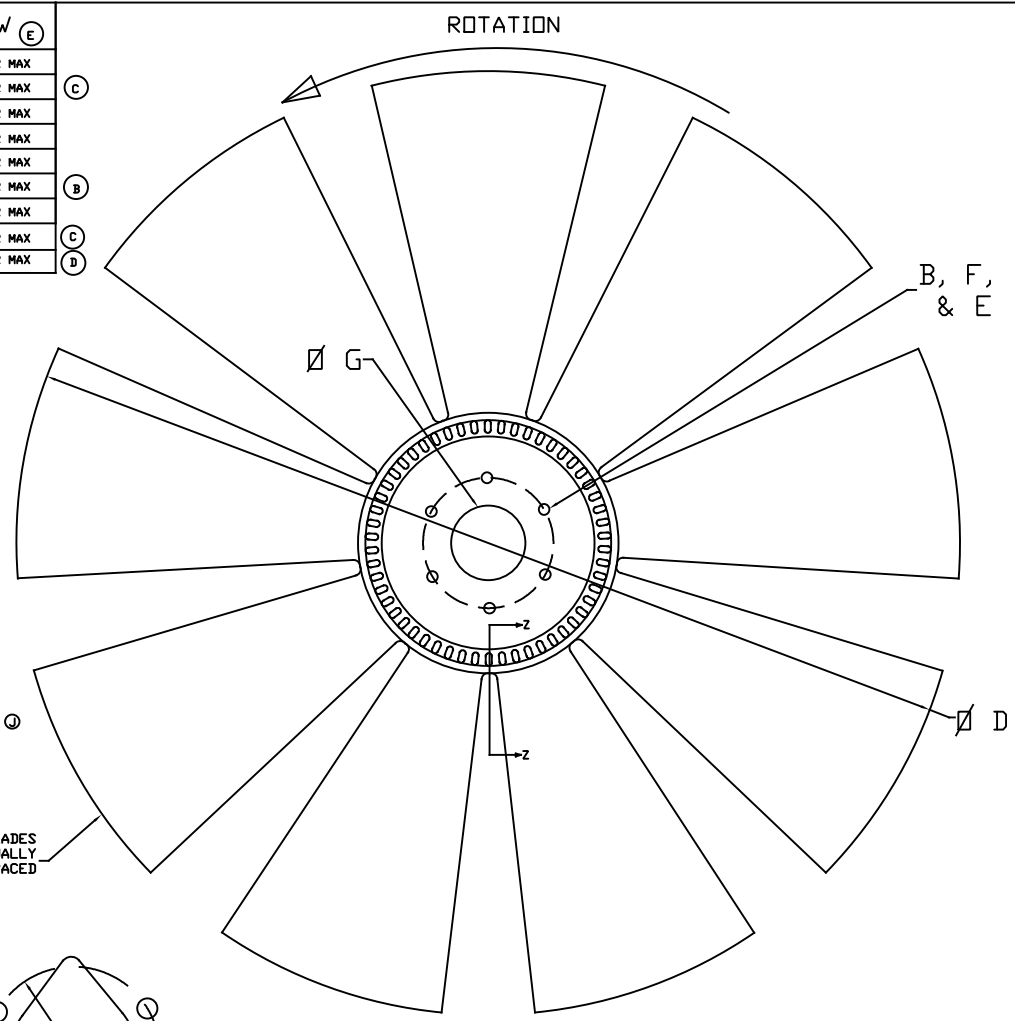


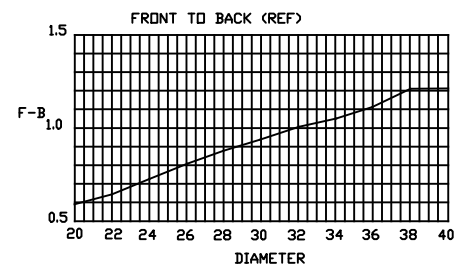
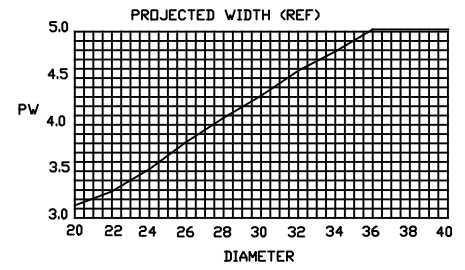
| ACE PART NUMBER | G PILOT #   | B REF. HOLE # | F REF. HOLE # | E # HOLES | NOTES            | H DESK            | PW (E)    |
|-----------------|-------------|---------------|---------------|-----------|------------------|-------------------|-----------|
| 367200          | 2.000/2.003 | 3.500         | .406          | 6         |                  | 10150752004635    | 5.122 MAX |
| 36710X          | 1.002/1.004 | —             | —             | —         |                  | 10150751000000    | 5.122 MAX |
| 367256          | 2.562/2.565 | 3.500         | .406          | 6         | PILOT PER VIEW A | 10150752564635    | 5.122 MAX |
| 367500          | 5.001/5.004 | 6.000         | .406          | 6         |                  | 10150755004660    | 5.122 MAX |
| 367369          | 3.687/3.690 | 4.630         | .406          | 6         |                  | 10150753694646    | 5.122 MAX |
| 367300          | 3.002/3.005 | 5.250         | .433          | 6         |                  | 10150753004652    | 5.122 MAX |
| 367325          | 3.250/3.253 | 3.810         | .406          | 4         |                  | 10150753254438    | 5.122 MAX |
| 367100          | 1.002/1.004 | 1.970         | .343          | 4         |                  | 10150751003419424 | 5.122 MAX |
| 367400          | 4.000/4.003 | 4.478         | .228          | 8         |                  | 10150754002845    | 5.122 MAX |

SEE PILOT LISTING P/N 999999 FOR ADDITIONAL PILOTS (G)

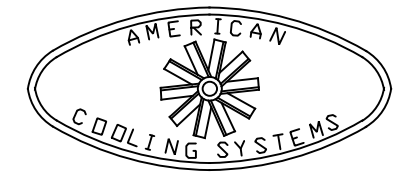
- NOTES:
- MATERIAL: B3VG6 OR PA6GF30 NYLON 6 GLASS FILLED 30%
  - BALANCE TO .4 OZ/IN. BALANCE TO BE ACHIEVED BY MATERIAL REMOVAL AT BLADE TIP UP TO .3 INCHES ON 4 BLADES OR BY ADDITION OF BALANCE WEIGHTS ON HUB RIBS.
  - A DASH NUMBER WILL BE INCLUDED DESIGNATING FAN DIAMETER (ØD). EX. 367500-40 (INCHES) OR 367500-1016 (MM). THE MAX REFERENCE FAN DIA IS 40 INCHES. THE DIA TOLERANCE ON MOLDED FAN DIAMETERS IS +.150/- .236. THE DIA TOLERANCE ON CUT DIAMETERS IS +0/- .236. THE MAXIMUM CUT DIA IS 1005 MM (39.6 IN). BEYOND 1005 THE FAN DIAMETER IS THE AS MOLDED DIAMETER OF 40 INCHES (1016 MM).
  - PW IS DEFINED AS THE MAXIMUM MEASUREMENT FRONT TO BACK.



NOTE: BLADES REMOVED FOR CLARITY



| SYMBOL | DESCRIPTION                         | DATE        |
|--------|-------------------------------------|-------------|
| L 0090 | CHANGE MOLDED DIAMETER TO 40 INCHES | RKH 31OCT18 |
| K 0084 | ADD DIM CLARIFICATION TO NOTE 4     | GFS 23NOV16 |
| J 0046 | CORRECT DWG                         | GFS 20DEC05 |
| I 0045 | MODIFY NOTE 3 AND ADD REF DIMS.     | GFS 24OCT05 |
| H 0021 | MODIFY NOTE 3 TO DEFINE MOLDED DIA  | GFS 11APR02 |
|        | MADE HUB TO BACK DIM REF            |             |
| G 0019 | ADD NOTE ON PILOTS                  | GFS 19MAR02 |
| F 0018 | ADD BALANCE WEIGHT P/N TO PRINT     | GFS 20FEB02 |
| E 0017 | CHG PW TO MAX DIM                   | GFS 06DEC01 |
| D 0012 | ADD 4.0 PILOT                       | GFS 01SEP00 |
| C 0006 | CHGD AND ADDED 1.0 PILOT, CDR DWG   | GFS 29FEB00 |
| B 0007 | CHANGED TO 3.002/3.005 PILOT        | GFS 29FEB00 |
| A 0003 | RELEASED                            | GFS 11NOV99 |
|        | REVISION                            | OK'D DATE   |



|  |           |                    |              |
|--|-----------|--------------------|--------------|
| PART NAME  |           | FAN ASSEMBLY - 367 |              |
| DRAWN  | GFS       | APPROVED           |              |
| DATE   | 10MAY99   | SCALE              | 1/4          |
| MATERIAL   | NOTED     | ENGINEER           | G. SPRINGMAN |
| SHRINK   | .05 IN/IN | DC                 |              |
| FINISH   | NOTED     | HFS                |              |
| THIS DRAWING HAS BEEN PREPARED IN ACCORDANCE WITH ASME Y14.3-1994            |           | CUSTOMER           |              |
| TIL UNLESS SPECIFIED SIZE +/- .030<br>X +/- .007<br>Z +/- .007<br>W +/- .007 |           | CUSTOMER PART NO.  |              |
|  |           | ACE PART NO.       |              |
|  |           | 367XXX             |              |