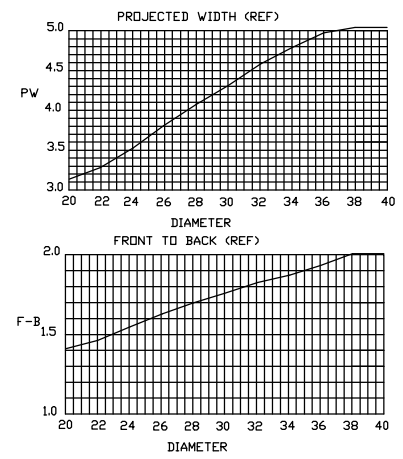
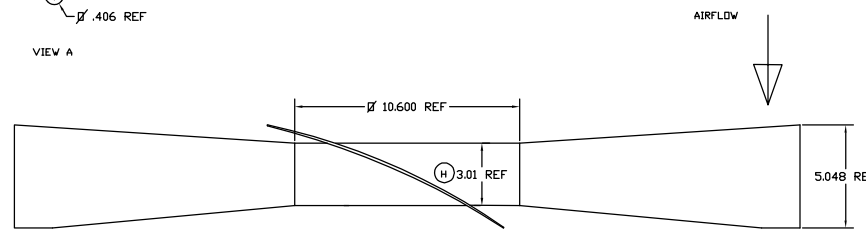
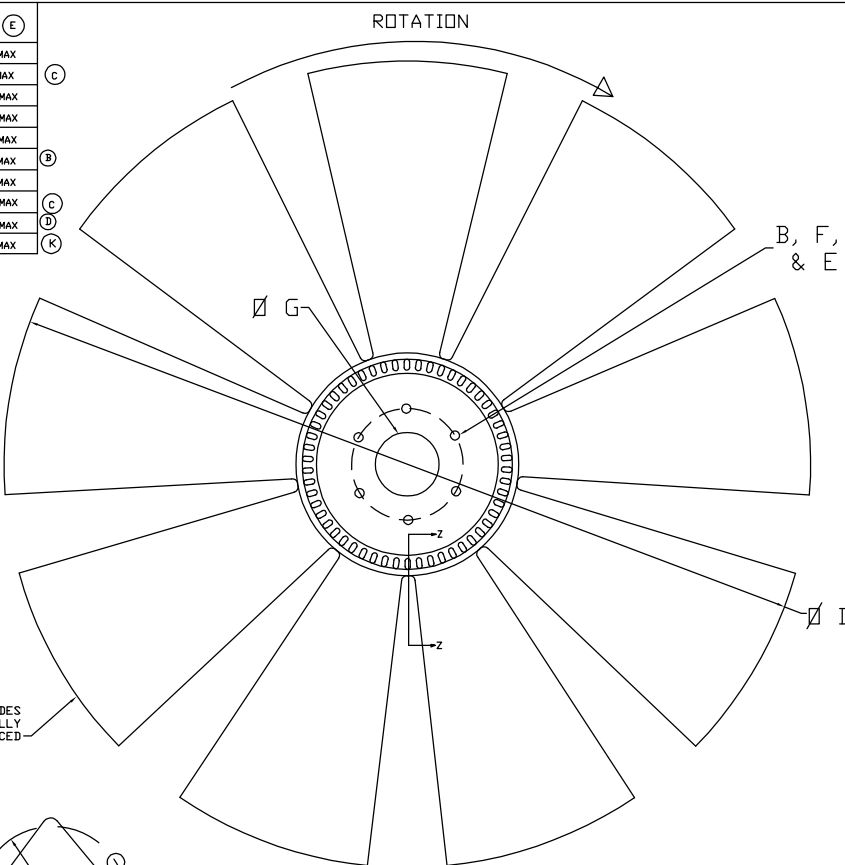
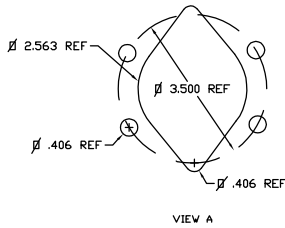
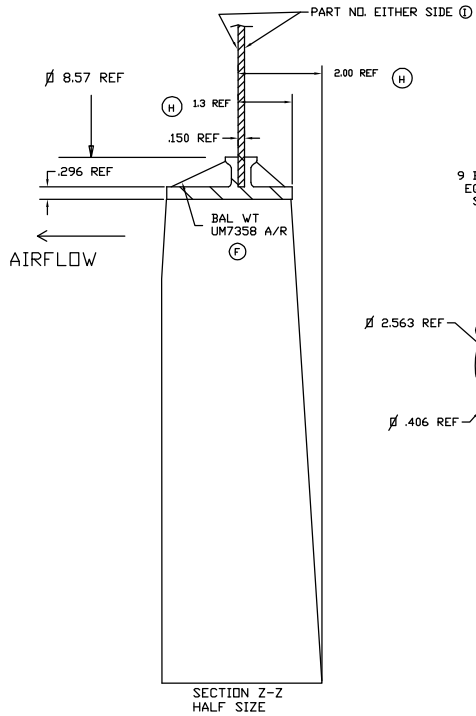


ACS PART NUMBER	G PILOT #	REF B CIRCLE #	REF F HOLE #	E # HOLES	NOTES	H DIM	PW (E)
216200	2.000/2.003	3.500	.406	6		10150002004635	5.127 MAX
21610X	1.002/1.004	—	—	—		10150001000000	5.127 MAX
216296	2.562/2.565	3.500	.406	6	PILOT PER VIEW A	10150002964635	5.127 MAX
216500	5.001/5.004	6.000	.406	6		10150005004660	5.127 MAX
216369	3.687/3.690	4.630	.406	6		10150003694646	5.127 MAX
216300	3.002/3.005	5.250	.433	6		10150003004652	5.127 MAX
216325	3.250/3.253	3.810	.406	4		10150003254438	5.127 MAX
216100	1.002/1.004	1.970	.343	4		101500010034194424	5.127 MAX
216400	4.000/4.003	4.478	.433	8		10150004002845	5.127 MAX
216196	1.967/1.970	3.937	.433	6		10150001964639	5.127 MAX

SEE PILOT LISTING P/N 999999 FOR ADDITIONAL PILOTS (G)

- NOTES:
- MATERIAL: B3VG6 OR PA6GF30 NYLON 6 GLASS FILLED 30%
 - BALANCE TO .4 OZ/IN. BALANCE TO BE ACHIEVED BY MATERIAL REMOVAL AT BLADE TIP UP TO .3 INCHES ON 4 BLADES OR BY ADDITION OF BALANCE WEIGHTS ON HUB RIBS.
 - A DASH NUMBER WILL BE INCLUDED DESIGNATING FAN DIAMETER (ØD). EX. 216500-40 (INCHES) OR 216500-1016 (MM). THE MAX REFERENCE FAN DIA IS 40 INCHES. THE DIA TOLERANCE ON MOLDED FAN DIAMETERS IS +.150/- .236. THE DIA TOLERANCE ON CUT DIAMETERS IS +0/- .236. THE MAXIMUM CUT DIA IS 1005 MM (39.6 IN). BEYOND 1005 THE FAN DIAMETER IS THE AS MOLDED DIAMETER OF 40 INCHES (1016 MM).
 - PW IS DEFINED AS THE MAXIMUM MEASUREMENT FRONT TO BACK.



SYM	ECN	REVISION	DATE
L	0088	INCREASE DIAMETER TO 40 INCHES	GFS 16AUG17
K	0085	ADD 197 PILOT	GFS 23FEB17
J	0084	ADD DIM CLARIFICATION TO NOTE 4	GFS 23NOV16
I	0046	CORRECT DWG	GFS 20DEC05
H	0045	MODIFY NOTE 3 AND ADD REF DIMS.	GFS 24OCT05
G	0019	ADD NOTE ON PILOTS	GFS 19MAR02
F	0018	ADD BALANCE WEIGHT P/N TO PRINT	GFS 20FEB02
E	0017	CHG PW TO MAX DIM	GFS 06DEC01
D	0012	ADD 4.0 PILOT	GFS 01SEP00
C	0006	CHGD AND ADDED 1.0 PILOT, COR DWG	GFS 29FEB00
B	0007	CHANGED TO 3.002/3.005 PILOT	GFS 29FEB00
A	0003	RELEASED	GFS 11NOV99



PART NAME
FAN ASSEMBLY - 216

DRAWN GFS APPROVED
DATE 10MAY99 SCALE 1/4
MATERIAL NOTED ENGNG G. SPRINGMAN
SHRINK .05 IN/IN CC
FINISH NOTED WFS

THIS DRAWING HAS BEEN PREPARED IN ACCORDANCE WITH ASME Y14.5M-1994

TOL. UNLESS SPECIFIED
XXX +/- .020
XX +/- .010
X +/- .005
- +/- .1

CUSTOMER PART NO.
216XXX