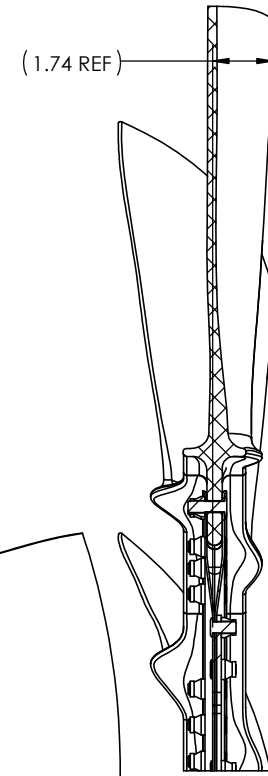
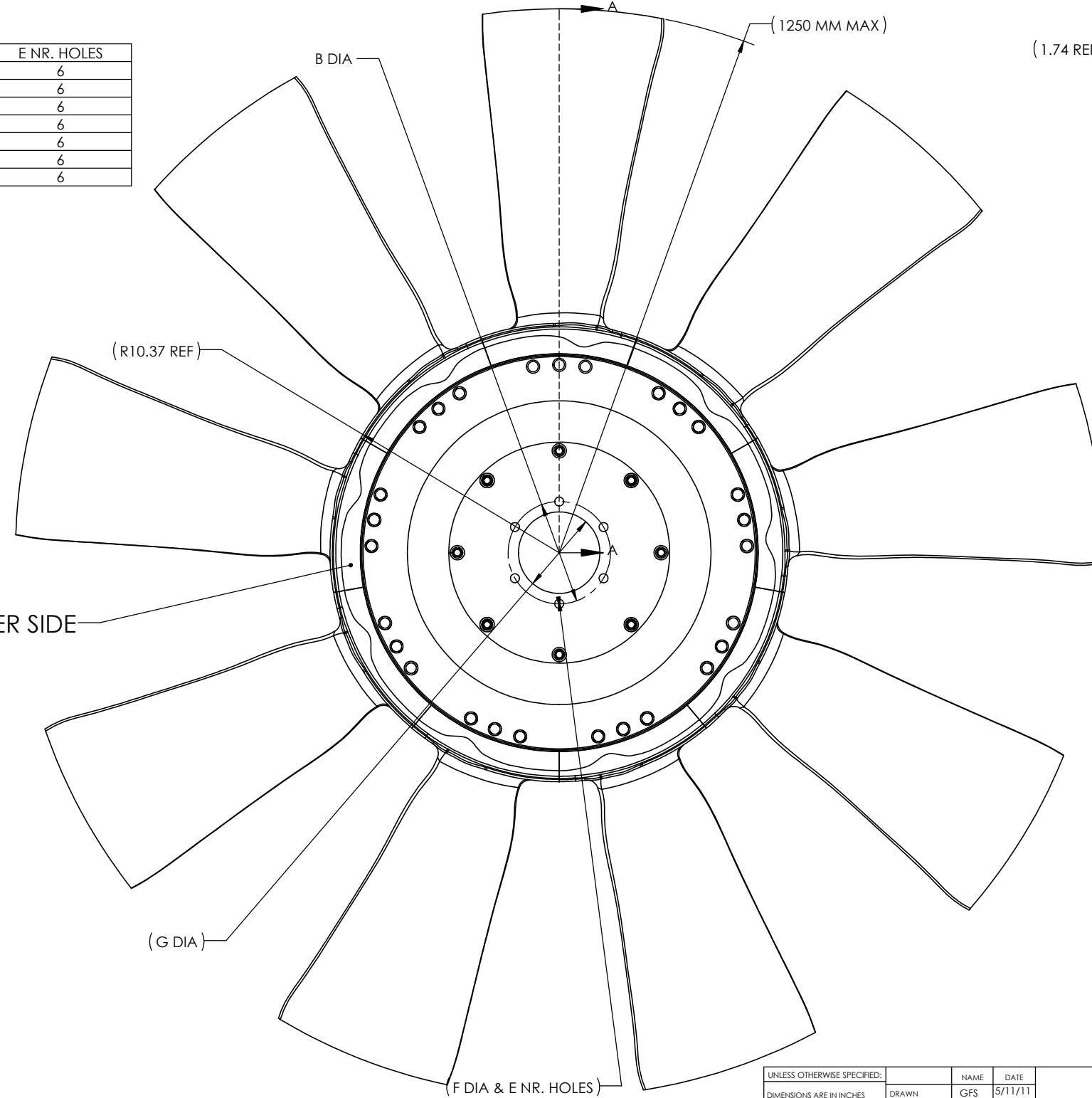


ROTATION →

PART NUMBER	G PILOT	B BOLT CIRCLE	F BOLT HOLE	E NR. HOLES
21609200	2.000/2.003	3.500	.406	6
2160925A	2.562/2.565	3.500	.406	6
21609300	3.002/3.005	5.250	.433	6
2160930A	3.002/3.005	5.500	.531	6
21609369	3.687/3.690	4.630	.406	6
21609500	5.001/5.004	6.000	.406	6
21609708	7.086/7.089	7.874	.354	6



SECTION A-A
SCALE 1 : 4

MARK P/N EITHER SIDE

NOTES:

1. BLADE MATERIAL: PA6GF30
2. DISK MATERIAL: STEEL SAE 1010 OR 1008
3. BALANCE TO 1.0 OZ-IN.
4. MAX DIAMETER IS 1250 MM. TOL +.150/- .236 INCH. CUT DIA +0/- .236.
5. DIAMETER TO BE INDICATED BY DASH NUMBER 2 DIGITS IN, 3 DIGITS MM FOR EXPAMPLE 21609200-48.

UNLESS OTHERWISE SPECIFIED:	NAME	DATE
DIMENSIONS ARE IN INCHES	GFS	5/11/11
TOLERANCES:		
ANGULAR: +/- 1 DEGREE		
ONE PLACE DECIMAL +/- .070		
TWO PLACE DECIMAL +/- .050		
THREE PLACE DECIMAL +/- .030		
	G.A.	
	COMMENTS:	
MATERIAL		
FINISH		
DO NOT SCALE DRAWING		

PROPRIETARY AND CONFIDENTIAL
THE INFORMATION CONTAINED IN THIS DRAWING IS THE SOLE PROPERTY OF AMERICAN COOLING SYSTEMS. ANY REPRODUCTION IN PART OR AS A WHOLE WITHOUT THE WRITTEN PERMISSION IS PROHIBITED.

TITLE:		
FAN ASSEMBLY 9 BLD		
SIZE	DWG. NO.	REV
C	21609XXX	
SCALE: 1:12	WEIGHT:	SHEET 1 OF 1