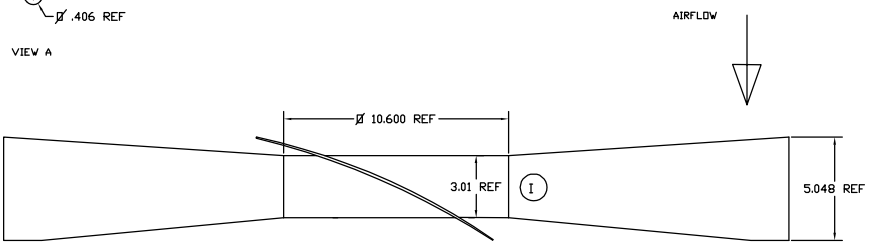
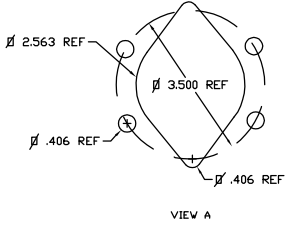
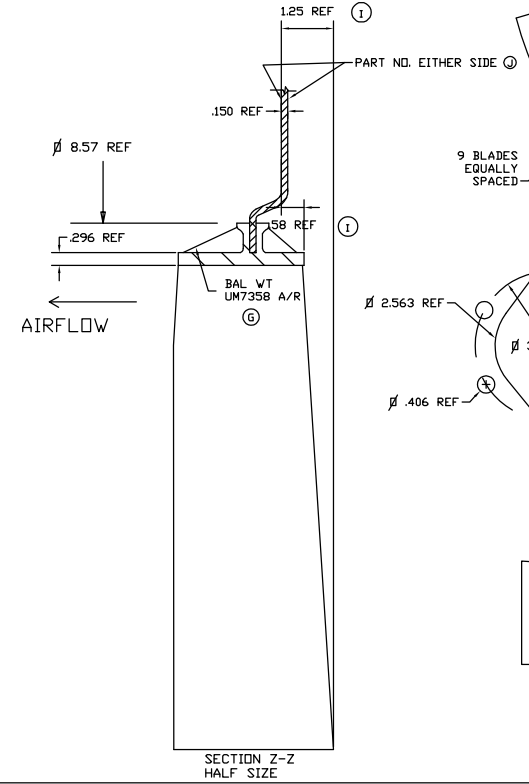
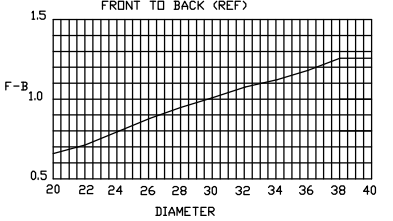
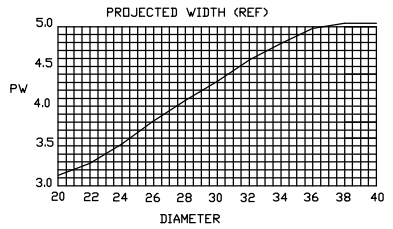
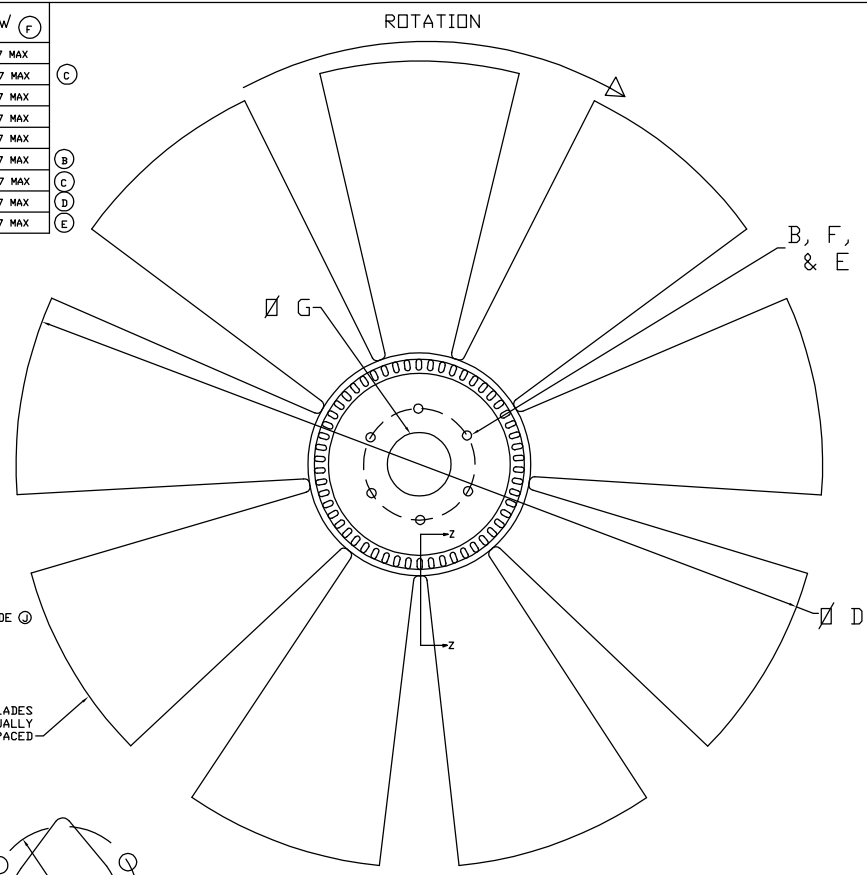


ACS PART NUMBER	G PILOT #	B REF CHORD #	F REF RIB #	E # RIBS	NOTES	H HUB	PW (F)
215200	2.000/2.003	3.500	.406	6		10150752004635	5.127 MAX
21510X	1.002/1.004	—	—	—		10150751000000	5.127 MAX
215296	2.562/2.565	3.500	.406	6	PILOT PER VIEW A	10150752564635	5.127 MAX
215500	5.001/5.004	6.000	.406	6		10150755004660	5.127 MAX
215369	3.687/3.690	4.630	.406	6		10150753694646	5.127 MAX
215300	3.002/3.005	3.250	.433	6		10150753004652	5.127 MAX
215100	1.002/1.004	1.970	.343	4		101507510034194424	5.127 MAX
215400	4.000/4.003	4.478	.228	8		10150754002845	5.127 MAX
215325	3.250/3.253	3.810	.406	4		10150753254438	5.127 MAX

SEE PILOT LISTING P/N 999999 FOR ADDITIONAL PILOTS (H)

- NOTES:
- MATERIAL: B9W66 DR PA6GF30 NYLON 6 GLASS FILLED 30%
 - BALANCE TO .4 OZ/IN. BALANCE TO BE ACHIEVED BY MATERIAL REMOVAL AT BLADE TIP UP TO .3 INCHES ON 4 BLADES OR BY ADDITION OF BALANCE WEIGHTS ON HUB RIBS.
 - A DASH NUMBER WILL BE INCLUDED DESIGNATING FAN DIAMETER (ØD).
EX. 215500-38 (INCHES)
OR 215500-955 (MM).
 - THE MAX REFERENCE FAN DIA IS 40 INCHES. THE DIA TOLERANCE ON MOLDED FAN DIAMETERS IS +.150/- .236. THE DIA TOLERANCE ON CUT DIAMETERS IS +0/- .236. THE MAXIMUM CUT DIA IS 1005 MM (39.6 IN). BEYOND 1005 THE FAN DIAMETER IS THE AS MOLDED DIAMETER OF 40 INCHES (1016 MM).
 - PW IS DEFINED AS THE MAXIMUM MEASUREMENT FRONT TO BACK.



NOTE: BLADES REMOVED FOR CLARITY

SYM	ECN	REVISION	OK'D	DATE
L	0088	Increase DIAMETER TO 40 INCHES	GFS	16AUG17
K	0084	ADD DIM CLARIFICATION TO NOTE 4	GFS	23NOV16
J	0046	CORRECT DWG	GFS	20DEC05
I	0045	MODIFY NOTE 3 AND ADD REF DIMS.	GFS	24DEC05
H	0019	ADD NOTE ON PILOTS	GFS	19MAR02
G	0018	ADD BALANCE WEIGHT P/N TO PRINT	GFS	20FEB02
F	0017	CHG PW TO MAX DIM	GFS	06DEC01
E	0015	ADD 3.25 PILOT	GFS	15MAR01
D	0012	ADD 4.0 PILOT	GFS	01SEP00
C	0006	CHGD AND ADDED 1.0 PILOT. COR DWG	GFS	29FEB00
B	0007	CHANGED TO 3.002/3.005 PILOT	GFS	29FEB00
A	0003	RELEASED	GFS	11NOV99



PART NAME		FAN ASSEMBLY - 215	
DRAWN	GFS	APPROVED	
DATE	10MAY99	SCALE	1/4
MATERIAL	NOTED	ENGRG	G. SPRINGMAN
SHRINK	.05 IN/IN	CC	
FINISH	NOTED	WFS	
THIS DRAWING HAS BEEN PREPARED IN ACCORDANCE WITH ASME Y14.3M-1994		CUSTOMER	
TOL. UNLESS SPECIFIED 300 +/- .020 30 +/- .010 X +/- .010 Ø +/- .010		CUSTOMER PART NO.	
ACS PART NO.		215XXX	