

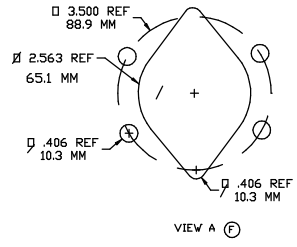
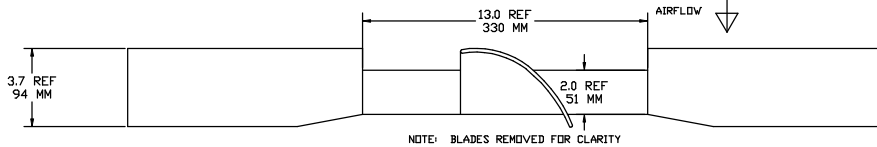
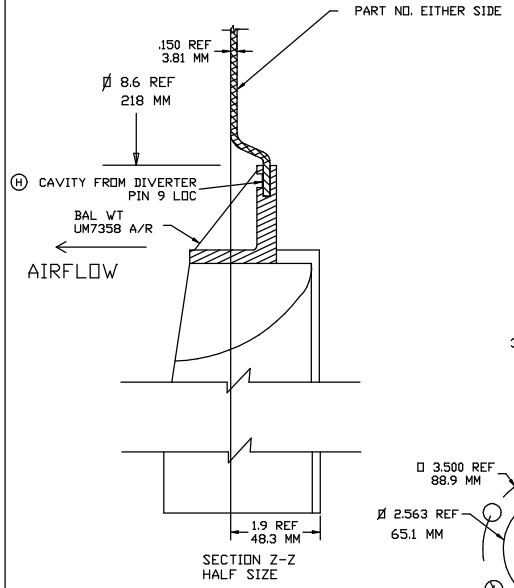
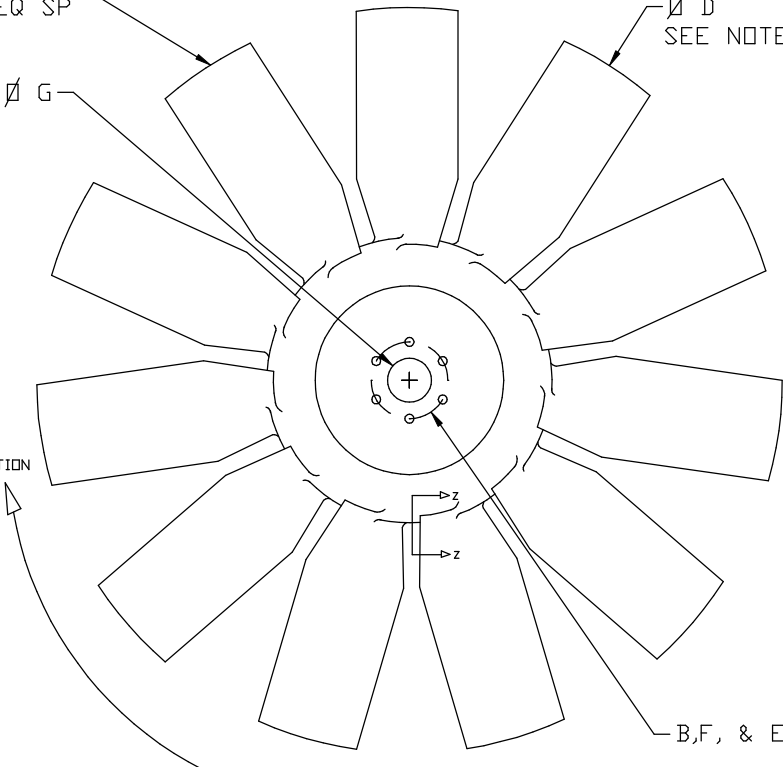
ACS PART NUMBER	G PILOT # REF	B REF HOLE # REF	F REF HOLE # REF	E HOLES REF	NOTES	H DISK
003200	2.000/2.003	3.500	.406	6		10150752004635
00310X	1.002/1.004	—	—	—		10150751000000
003256	2.562/2.565	3.500	.406	6	PILOT PER VIEW A	10150002564635
003500	5.001/5.004	6.000	.406	6		10150755004660
003100	1.002/1.004	1.970	.343	4		101507510034194424
003369	3.687/3.690	4.630	.406	6		10150753694646
003400	4.000/4.003	4.478	.228	8		10150754002845
003325	3.250/3.253	3.810	.406	4		10150753254438
00325A	2.562/2.565	3.500	.406	6	DIA .32 IN OR LESS	101507525A4635
00325V	2.562/2.565	3.500	.406	6	ALL DIA	101507525V4635

NOTES

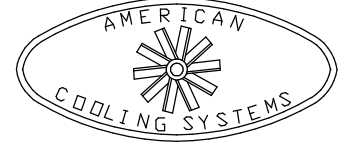
- MATERIAL: B3W66 OR PA6GF30 NYLON 6 GLASS FILLED 30%
- BALANCE TO .4 OZ/IN. BALANCE TO BE ACHIEVED BY MATERIAL REMOVAL AT BLADE TIP UP TO .3 INCHES ON 4 BLADES OR BY ADDITION OF BALANCE WEIGHTS ON HUB RIBS.
- A DASH NUMBER WILL BE INCLUDED DESIGNATING FAN DIAMETER (ØD). EX: 003500-34 (INCHES) OR 003500-864 (MM). THE MAX REFERENCE FAN DIA IS 34 INCHES. THE DIA TOLERANCE ON MOLDED FAN DIAMETERS IS +.150/- .236. THE DIA TOLERANCE ON CUT DIAMETERS IS +0/- .236.
- P/V AT THE TIP OF THE BLADE, DEFINED AS THE MAXIMUM MEASUREMENT FRONT TO BACK, IS 3.6 INCHES.
- DIAMETERS .32 INCHES AND GREATER WILL USE THE HSLAS-F (ASTM 1011) DISK. P/N 101507525V4635 ONLY.
- HSLAS-F (ASTM 1011) WILL BE USED FOR ALL 2.562/2.565 ROUND PILOT DISKS.

11 BLADES EQ SP

Ø D SEE NOTE 3



REV	DESCRIPTION	DATE	BY	CHK'D	DATE
H 0069	ADDED DIVERTER PINS TO TOOL		GFS		25OCT13
G 0066	ADD 25V DELETE 25A PILOT		GFS		14SEP11
F 0059	CHANGE NOTE 5 TO READ ".32 INCHES AND GREATER", ADD 2.56 PILOT BACK TO DWG		GFS		25APR08
E 0051	CHANGE S TO V IN DISK P/N		GFS		11APR07
D 0050	ADD HSLAS-F ASTM DISK REM 2.56 PILOT		GFS		7MAR07
C 0046	CORRECT DWG		GFS		20DEC05
B 0045	MODIFY NOTE 3		GFS		24OCT05
A 0035	RELEASED		GFS		18NDV03
SYM ECN	REVISION				DATE



PART NAME		FAN ASSEMBLY - 003	
DRAWN	GFS	APPROVED	
DATE	19 JUL 02	SCALE	1/4
MATERIAL	NOTED	ENGR	J. JAHNS
SHRINK	.05 IN/IN	DC	
FINISH	NOTED	MFG	
CUSTOMER		CUSTOMER PART NO.	
TIL, UNLESS SPECIFIED		ACS PART NO. 003XXX	