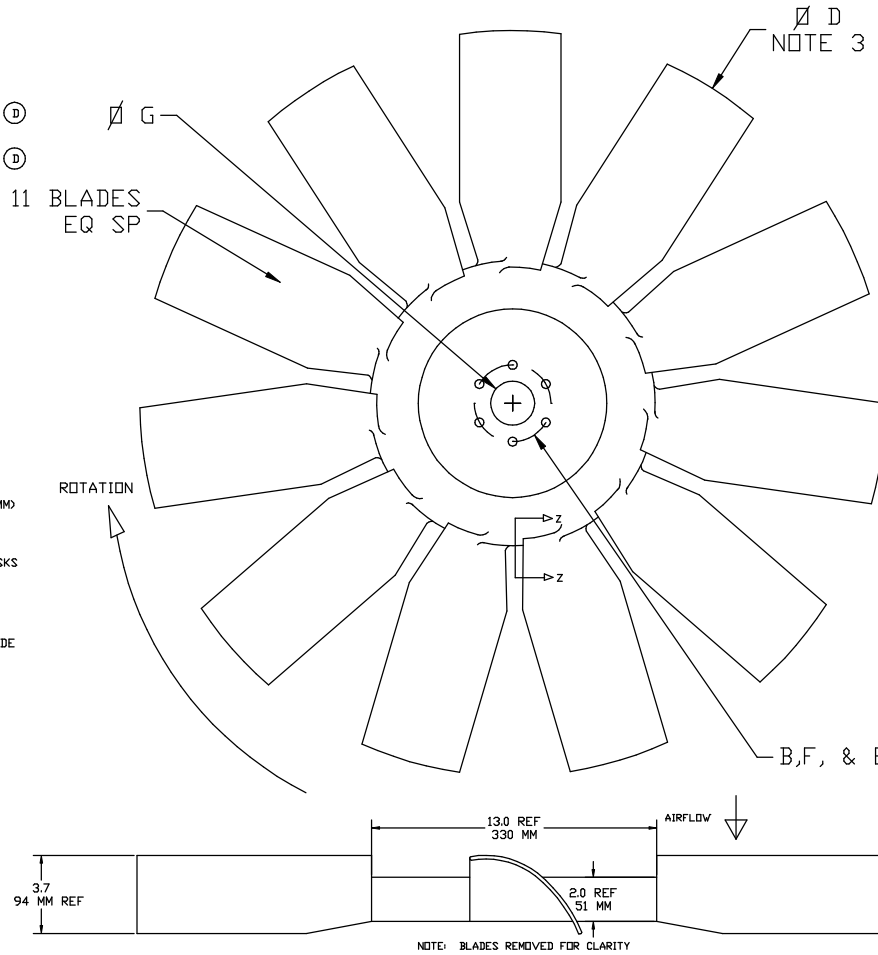
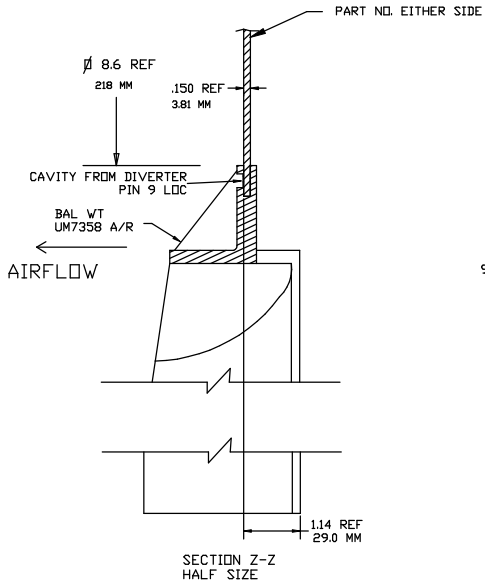


ACS PART NUMBER	G PILOT # REF	D REF PILOT # REF	F REF PILOT # REF	E # HOLES REF	NOTES	H	DISK
002200	2.000/2.003	3.500	.406	6			10150002004635
	50.8/50.9 MM	88.9 MM	10.3 MM				
00210X	1.002/1.004	—	—	—			10150001000000
	25.4/25.5 MM						
002369	3.687/3.690	4.630	.406	6			10150003694646
	93.6/93.7 MM	117.6 MM	10.3 MM				
00225V	2.562/2.565	3.500	.406	6	HSLA-F MTL		101500025V4635
	65.1/65.2 MM	88.9 MM	10.3 MM				
002500	5.001/5.004	6.000	.406	6			10150005004660
	127.0/127.1 MM	152.4 MM	10.3 MM				

NOTES:

- MATERIAL: B3W66 OR PA6GF30 NYLON 6 GLASS FILLED 30%
- BALANCE TO 4 OZ*(IN/GM) BALANCE TO BE ACHIEVED BY MATERIAL REMOVAL AT BLADE TIP UP TO .3 INCHES (7.6MM) ON 4 BLADES OR BY ADDITION OF BALANCE WEIGHTS ON HUB RIBS.
- A DASH NUMBER WILL BE INCLUDED DESIGNATING FAN DIAMETER (ØD). EX. 002500-34 (INCHES) OR 002500-864 (MM). THE MAX REFERENCE FAN DIA IS 34 INCHES(863.6MM). THE DIA TOLERANCE ON MOLDED FAN DIAMETERS IS +.150/- .236(+3.8/-6.0MM) THE DIA TOLERANCE ON CUT DIAMETERS IS +0/- .236(+0/6.0MM).
- PW AT THE TIP OF THE BLADE, DEFINED AS THE MAXIMUM MEASUREMENT FRONT TO BACK, IS 3.6 INCHES(91.4MM).
- USE HSLAS-F (ASTM 1011) MTL FOR ALL 2.562/2.565 ROUND PILOT DISKS



REV	DESCRIPTION	DATE	BY	CHK'D	DATE
E	0069 ADD MM DIM AND DIVERTER PIN CAVITIES		GFS		16DEC13
D	0066 DLT 25A PILOT ADD 25V AND 500 PILOT		GFS		14SEP11
C	0046 CORRECT DWG		GFS		20DEC05
B	0045 MODIFY NOTE 3		GFS		24DEC05
A	0035 RELEASED		GFS		18NDV03
SYM	ECN	REVISION		OK'D	DATE



PART NAME		FAN ASSEMBLY - 002	
DRAWN	GFS	APPROVED	
DATE	19 JUL 02	SCALE	1/4
MATERIAL	NOTED	ENGR	J. JAHNS
SHRINK	.05 IN/IN	DC	
FINISH	NOTED	MFG	
CUSTOMER			
CUSTOMER PART NO.			
TOL. UNLESS SPECIFIED			
XXX +/- .03			
XX +/- .02			
X +/- .01			
ACS PART NO.		002XXX	